

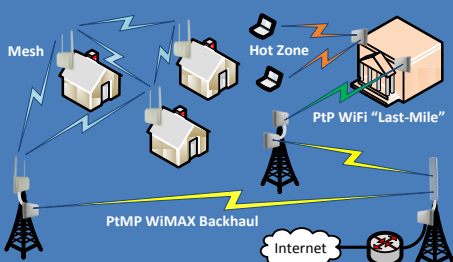
Tranzeo Wireless Technologies Inc. (TSX:TZT) leads the wireless broadband industry for value, by producing high-performance wireless network equipment with a low cost of ownership and unparalleled service allowing communities and businesses to communicate without boundaries. Since the company's inception in 2000, Tranzeo's optimum cost effectiveness, premium quality and responsive support have attracted a growing number of devoted dealers, distributors, and customers worldwide. Tranzeo's full spectrum of point-to-point and point-to-multipoint radios, WiMAX equipment, and mesh network solutions are designed for wireless internet service providers, governments, campuses, military, carriers, enterprise, and systems integrators.

WHAT IS WiMAX?

WiMAX is designed for "last mile" point to multi-point solutions. Like WiFi, it can support multi-megabit throughput. However, WiMAX has an inherent Quality of Service protocol and is designed to operate over longer distances compared to WiFi. WiMAX can operate in the unlicensed 5.1-5.8GHz spectrum similar to WiFi, but it can also operate in the 3.3-3.8GHz licensed spectrum. The 3GHz licensed spectrum allows for higher data rates and can transmit over longer distances since there is no interference from competing services.

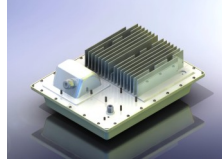
WHY TRANZEO?

Tranzeo offers a complete family of 802.16d (802.16-2004) WiMAX products for 3.5GHz, 3.65GHz, and 5.8GHz spectrums including indoor and outdoor Subscriber Units and Pico Base Stations. As well, we offer a comprehensive line of 900MHz, 2.4GHz, 4.9GHz, and 5.8GHz 802.11b/g and 802.11a standards-based WiFi products including Routing Access Points, CPE's, Full-Duplex PtP, and advanced Mesh Routers for complete turnkey solutions.



3.5GHZ, 3.65GHZ, AND 5.8GHZ

WiMAX OUTDOOR PICO BASE STATIONS



The **TR-WMX-35-pBS**, **TR-WMX-365-pBS** and **TR-WMX-58-pBS** Pico Base Stations deployed with Tranzeo's family of Subscriber Units provide the most cost-effective WiMAX solutions for delivering broadband wireless applications in extreme outdoor environments. Tranzeo offers turn-key solutions for last-mile and backhaul point-to-multipoint communication systems for operation in 3.5GHz licensed spectrum, 3.65GHz light-licensed spectrum, and 5.8GHz license-free spectrum, complete with the AirSync Element Management System from Proximetry.

3.5GHZ, 3.65GHZ, AND 5.8GHZ

WiMAX OUTDOOR AND INDOOR SUBSCRIBER UNITS



The **TR-WMX-3** and **TR-WMX-5** Series of weatherproof outdoor units and the **TR-WMX-5-35-i50** rugged indoor unit are members of Tranzeo's family of low cost Subscriber Units, which are based on the IEEE802.16d-2004 standard and a WiMAX Forum Certified design to ensure seamless interoperability with all WiMAX Certified Base Stations. Tranzeo has completed interoperability testing with some of the largest Base Station suppliers in the world.

5.8GHZ

FULL-DUPLEX BACKHAUL



The high performance dual-radio **TR-FDD** series utilizes two radios, allowing data to flow in both directions at the same time with significantly less delay. The unique design of these products allows for the use of interchangeable channel filters to meet changing requirements. These units support 5, 10 and 20 MHz channels. The enhanced radio filtering matches the channel size, allowing the radios to only listen to the desired channels, providing at least 65dB of adjacent channel rejection for enhanced performance in locations with multiple radios. The **TR-FDD GT** series of products feature amplified radios with up to +26dBm output power for more demanding applications.

900MHZ, 2.4GHZ, 4.9GHZ, AND 5.8GHZ

WIRELESS MESH ROUTERS AND ACCESS POINTS



Specifically designed for outdoor applications, the **EnRoute Series** including the **EN404**, **EN505**, and **EN509** wireless mesh routers and access points feature high performance radio system and employ Tranzeo's patented **WirelessFabric™** mesh networking protocol. The dual-radio system serves as a WiFi access point with a dedicated 802.11a/b/g radio, an intra-network repeater and router with a 2nd dedicated 802.11a/b/g mesh-enabled radio, and as a gateway via Ethernet to an Internet point-of-presence (POP). Using Tranzeo's self-forming and self-healing dual-radio mesh networking technology allows separation of the user access in the crowded 2.4GHz band from the mesh backhaul operation at 4.9GHz, 5.8GHz, or 900MHz resulting in extremely reliable networks with high throughput.

ALL-IN-ONE DEVICES

- Integrated panel antenna, pole-mounting hardware, and PoE for low cost of ownership.
- Daylight-visible antenna alignment LED's.
- Rugged & weatherproof design for conditions ranging from -65 °C to +65 °C.
- IP67 and NEMA Type 4X compliant design.
- Power-over-Ethernet (PoE) for running data and power using a single CAT5 cable for quick and easy installations.
- PoE Injector and DC adapter with built-in surge protection for worry-free operation.
- Dual-Ethernet ports for daisy-chaining radios or other PoE devices such as cameras.

INDUSTRY LEADING WARRANTY AND TECHNICAL SUPPORT

- 5-Year Parts & 3-Year Parts & Labor on all WiFi radios.
- 3-Year Parts and Labor on WiMAX Subscriber Units, and 1-Year Parts and Labor on WiMAX Pico Base Stations.
- Lifetime technical support via Telephone, Email, and Live Chat.

VERTICAL MARKETS

- PtP and PtMP wireless backhaul or last-mile solutions for Telecom and Cable companies.
- Inter-building connectivity or wireless hot zones for Schools and University Campuses.
- Wireless hot zones for Campgrounds, Resorts, Marinas, and Truck stops.
- Rapid deployment for special events for video streaming, security, and hot zones.
- Inter-branch and warehouse connectivity for enterprise customers.
- Low cost enterprise networks in old buildings, warehouses, factories, and mines.
- Internet service for multi-tenant housing.
- Wireless Community Broadband for Internet access and policing.
- Public Safety, Emergency Response, and Environmental Monitoring.
- Rapid deployment for disaster response for VoIP, video conferencing, and surveillance.
- Street lighting control, traffic monitoring and advisory, and remote data acquisition.

900MHz, 2.4GHz, 4.9GHz, AND 5.8GHz

OUTDOOR WIRELESS ROUTERS AND ACCESS POINTS



The **EL-400**, **EL-500**, and **EL-900** family of outdoor products are Tranzeo's 7th generation enterprise-level wireless routers and access points, which are Linux-based and use the powerful **AMCC PowerPC** platform. The **EL** family of products feature a high performance radio and advanced networking and management capabilities including Router and Bridge Modes, VLAN, multiple ESSID's, DHCP Server, QoS, Security, Bandwidth Management, and VPN Pass-through.

900MH, 2.4GHZ, 4.9GHZ, AND 5.8GHZ

OUTDOOR AND INDOOR ACCESS POINTS/PxP/CPE



The **TR-902**, **TR-6000**, **TR-49**, **TR-5**, and **TR-SL5** family of **outdoor** units, and **TR-490**, **TR-500**, and **TR-600** family of **indoor** units feature a versatile Tri-Mode design that allows these units to be configured as an Access Point (AP), Point-to-Point Bridge (PxP), or as a Customer Premise Equipment (CPE). All of these product series, except the **TR-SL5**, are equipped with **Dual-Ethernet** ports for daisy-chaining multiple radios or other PoE devices. These units also feature high performance radios with up to +26dBm output power and advanced networking and management capabilities including NAT Routing, StreamEngine™ QoS, Security, Bandwidth Throttling, PoE, and VPN Pass-through.

900MH, 2.4GHZ, AND 5.8GHZ

OUTDOOR CUSTOMER PREMISE EQUIPMENT (CPE)



The **TR-CPQ**, **TR-SL2**, **TR-SL5**, and **TR-SL9** family of CPE devices feature streamlined All-in-One design with integrated panel antenna, pole-mounting hardware, and Power-over-Ethernet (PoE) for the **lowest cost of ownership**. These units also feature high performance radios with output power control and advanced networking and management capabilities including NAT Routing, StreamEngine™ QoS, WEP/WPA/WPA2 Security, Bandwidth Throttling, PPPoE, and VPN-Pass-through. The **TR-SL5** series of products have been recently improved to support Tri-Mode operation (AP, PxP, or CPE), and are now suitable for less demanding and very cost-sensitive AP and PxP deployments.

2.4GHZ

OUTDOOR AND INDOOR 802.11N ACCESS POINT/PxP/CPE



Tranzeo's new EX2 series of wireless LAN products are IEEE 802.11b/g/n compliant, operate in the license-free 2.4GHz frequency band, and support data rates of up to **150 Mbps**. The versatile multi-mode design supports AP, CPE, and WDS AP Repeater and Bridge modes, and features advanced networking and management capabilities including WEP/WPA/WPA2 security, WMM QoS, and NAT Routing. The compact **All-in-One** design incorporates an integrated **8dBi** panel antenna and a high performance radio with up to **+26dBm** output power. An **N-Type** connector is also available for connecting an external antenna.

TRANZEO WIRELESS TECHNOLOGIES INC.

19473 Fraser Way, Pitt Meadows, BC, Canada V3Y 2V4
TEL: 604.460.6002 • FAX: 604.460.6005 • Toll Free: 1.866.872.6936
www.tranzeo.com • sales@tranzeo.com • support@tranzeo.com